

COVID-19 Data Update

Manchester Health Scrutiny Committee

Wednesday 9 March 2022

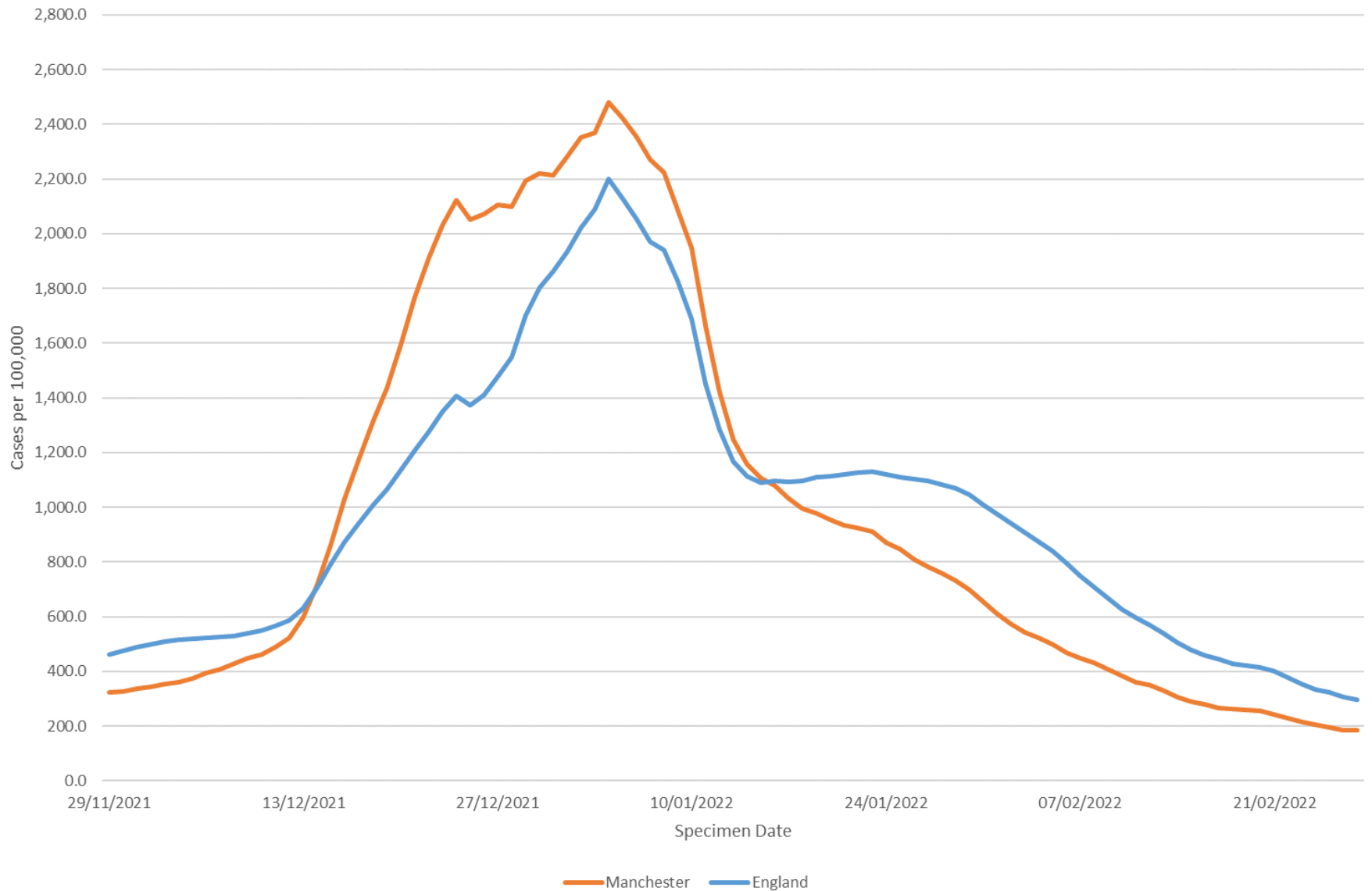
David Regan

Director of Public Health

Headline Figures (Latest Published Data)
7-days ending Tuesday 1 March 2022

Measure	All Ages	60+
Total number of new cases	1,047	135
Average number of new cases per day	150	19
Case detection rate per 100,000	188.4	188.6
7-day rate of change (%)	-17.7%	0.7%

Number of confirmed cases of COVID-19 per 100,000 population (7-day rolling average) in Manchester and England by specimen date (29 November 2021 to 27 February 2022)



Lower Tier Local Authorities in England with highest rates of confirmed cases of COVID-19 per 100,000 population (7-days ending Sunday 27 February 2022)

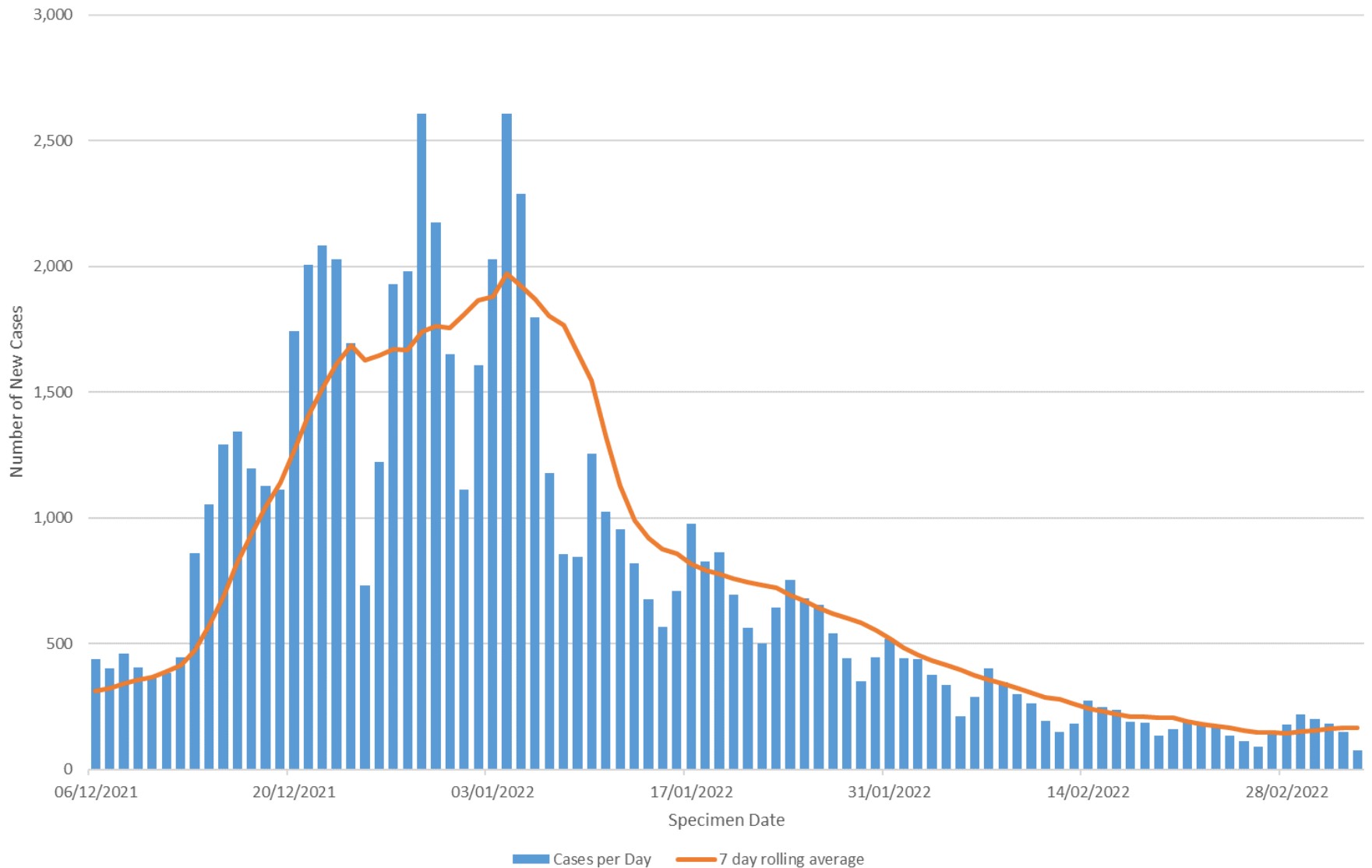
Rank	LA Name	Number of new cases	Rate per 1000,000 population	Change in number of new cases	% change in number of new cases
1	Tewkesbury	561	580.6	-114	-16.9%
2	Cheltenham	646	556.7	-178	-21.6%
3	Hastings	504	544.5	-134	-21.0%
4	Worthing	583	526.5	-316	-35.2%
5	Cambridge	653	522.1	-237	-26.6%
6	Horsham	748	514.2	-435	-36.8%
7	South Somerset	861	510.4	-273	-24.1%
8	Adur	307	478.3	-202	-39.7%
9	Sedgemoor	589	477.1	-160	-21.4%
10	Stroud	576	476.4	-213	-27.0%
:	:	:	:	:	:
289	Manchester	1,020	183.5	-407	-28.5%

Number of confirmed cases of COVID-19 and 7-day rate per 100,000 population
in Manchester: 24 February to 5 March 2022

7-days ending...	Daily number of cases	7 day total number of cases	Rate per 100,000 population	7-day rate of change (%)
24/02/2022	134	1,148	206.6	-22.1%
25/02/2022	111	1,074	193.3	-26.7%
26/02/2022	90	1,031	185.5	-28.8%
27/02/2022	150	1,021	183.7	-28.5%
28/02/2022	178	1,006	181.0	-25.2%
01/03/2022	217	1,047	188.4	-17.7%
02/03/2022	202	1,082	194.7	-10.0%
03/03/2022	183	1,131	203.5	-1.5%
04/03/2022	149	1,169	210.3	8.8%
05/03/2022	75	1,154	207.7	11.9%

Daily number of confirmed COVID-19 cases over time and 7-day rolling average in Manchester, by specimen date (6 December 2021 to 5 March 2022)

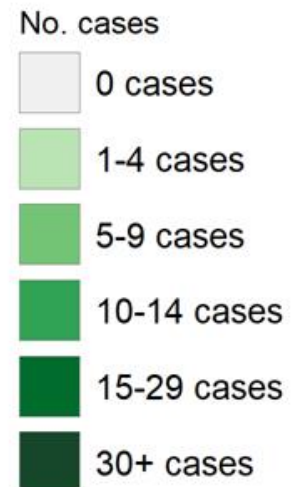
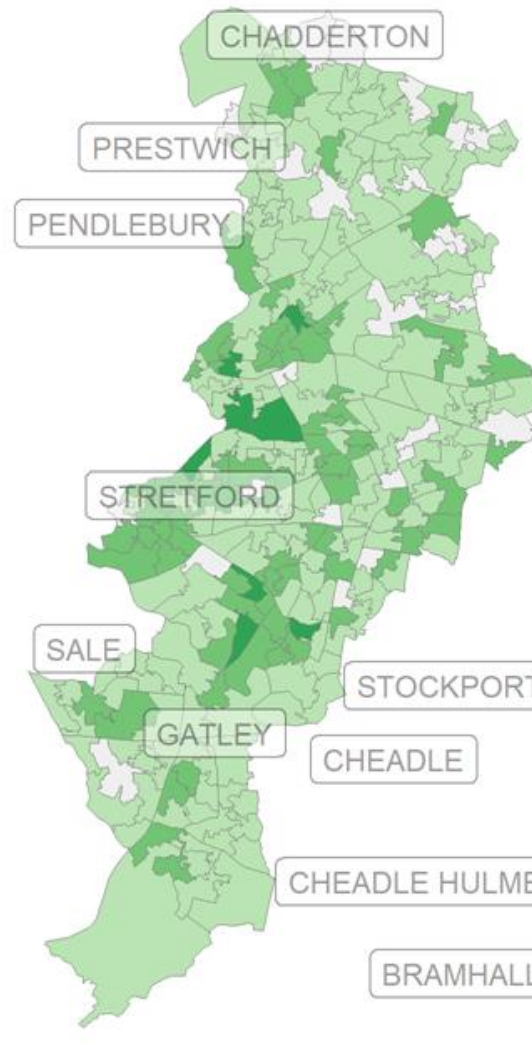
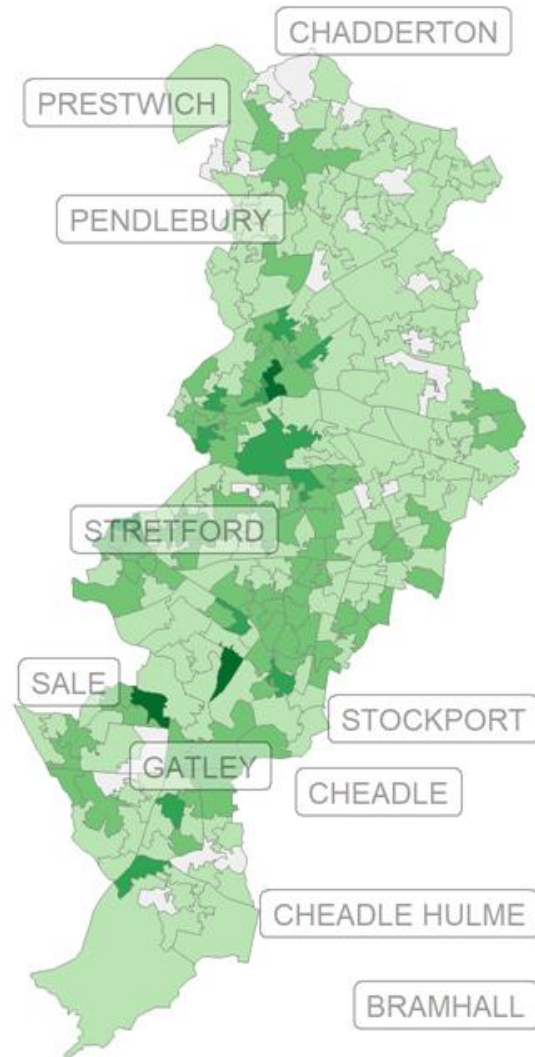
Data for the most recent 4 days (2 March -5 March) are provisional and subject to reporting delays



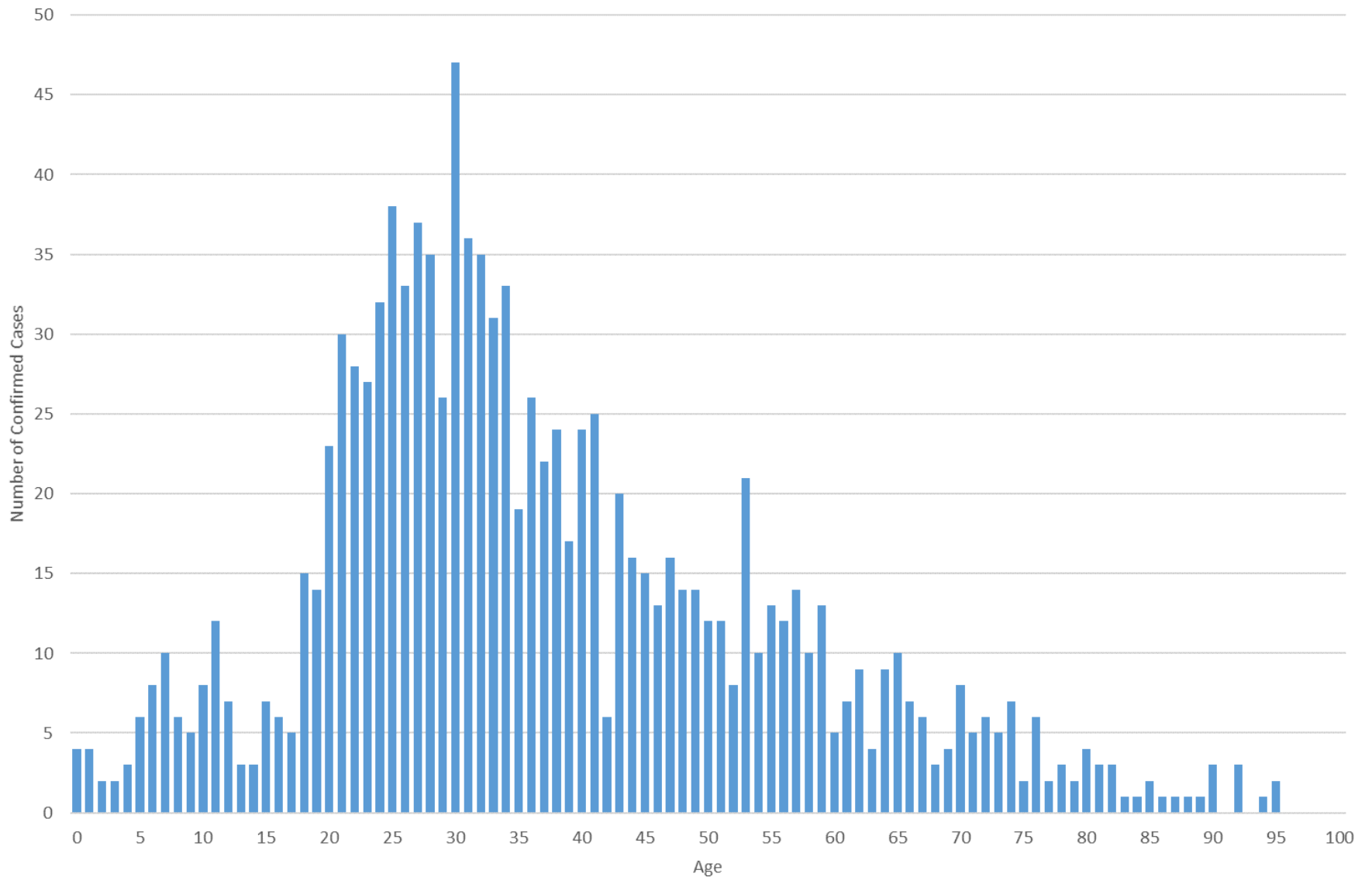
Number of confirmed COVID-19 cases in Manchester by Lower Super Output Area (LSOA) of residence (Most Recent 7 days and Prior 7 day Period)

17 February to 23 February 2022

24 February to 2 March 2022



Number of confirmed COVID-19 cases in most recent 7-days by single year of age (27 February to 5 March 2022)



Number of confirmed cases of COVID-19 and rate per 100,000 population in Manchester, by age group: 7-days up to 1 March 2022

	Number of cases	Rate per 100,000	Abs. change	7-day rate of change*
Pre-school (0-4 years)	11	30.4	-5	-31.3%
Primary school (5-10 years)	25	56.8	-4	-13.8%
Secondary school (11-16 years)	26	68.6	-22	-45.8%
Older teenagers (17-18 years)	20	162.3	-12	-37.5%
Younger working age (19-24 yrs)	144	181.9	-91	-38.7%
Working age (25-59 years)	686	249.8	-90	-11.6%
Younger older people (60-79 yrs)	103	176.1	12	13.2%
Older people (80+ years)	32	244.6	-13	-28.9%
Total (All ages)	1,047	188.4	-225	-17.7%

* Compared with prior 7-day period 16/02/2022 to 22/02/2022

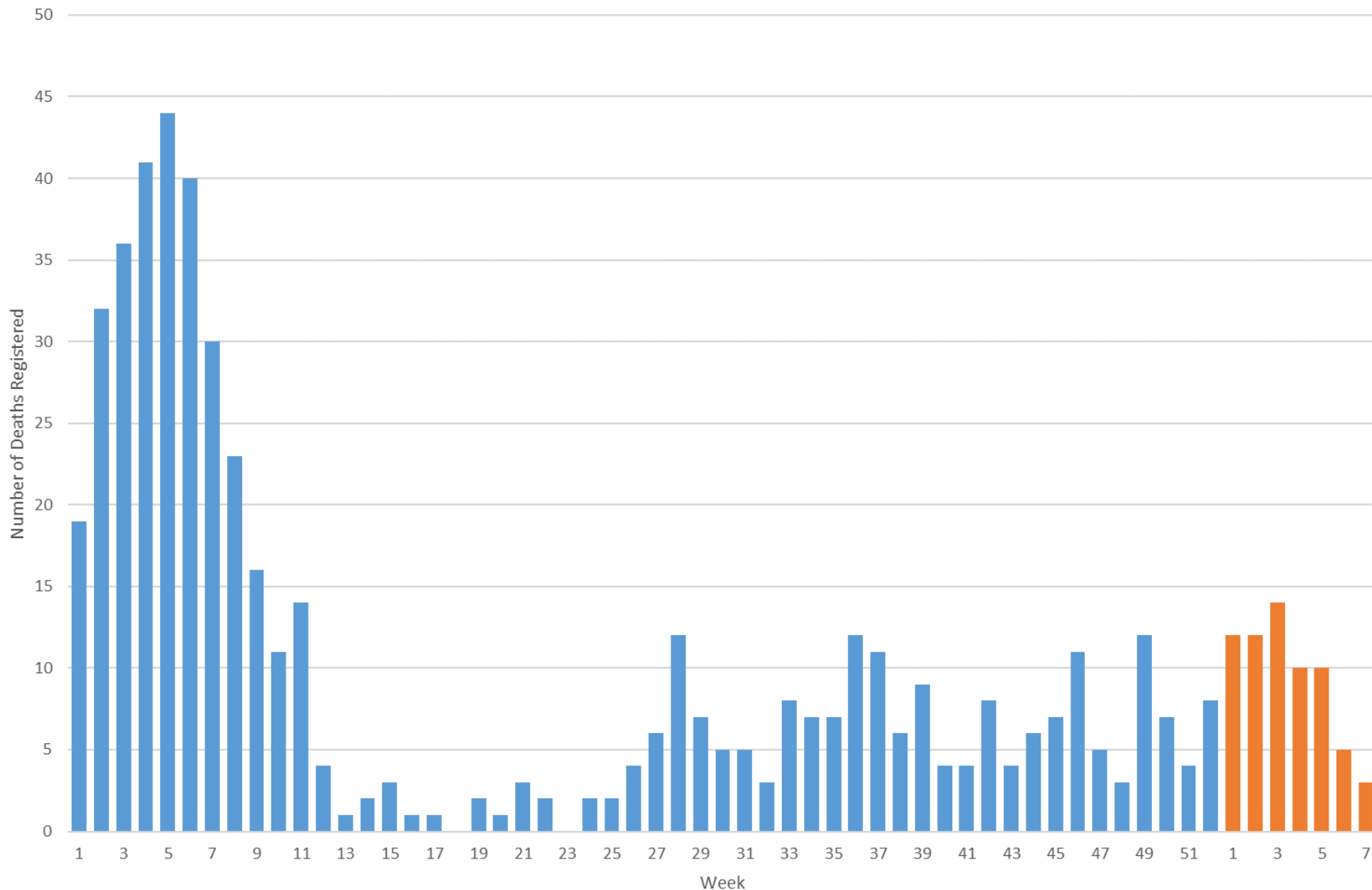
Number of COVID-19 virus tests conducted by Manchester residents per 100,000 population by test type (3 December 2020 to 3 March 2022)

This is based on a count of test results and may include more than one test per person



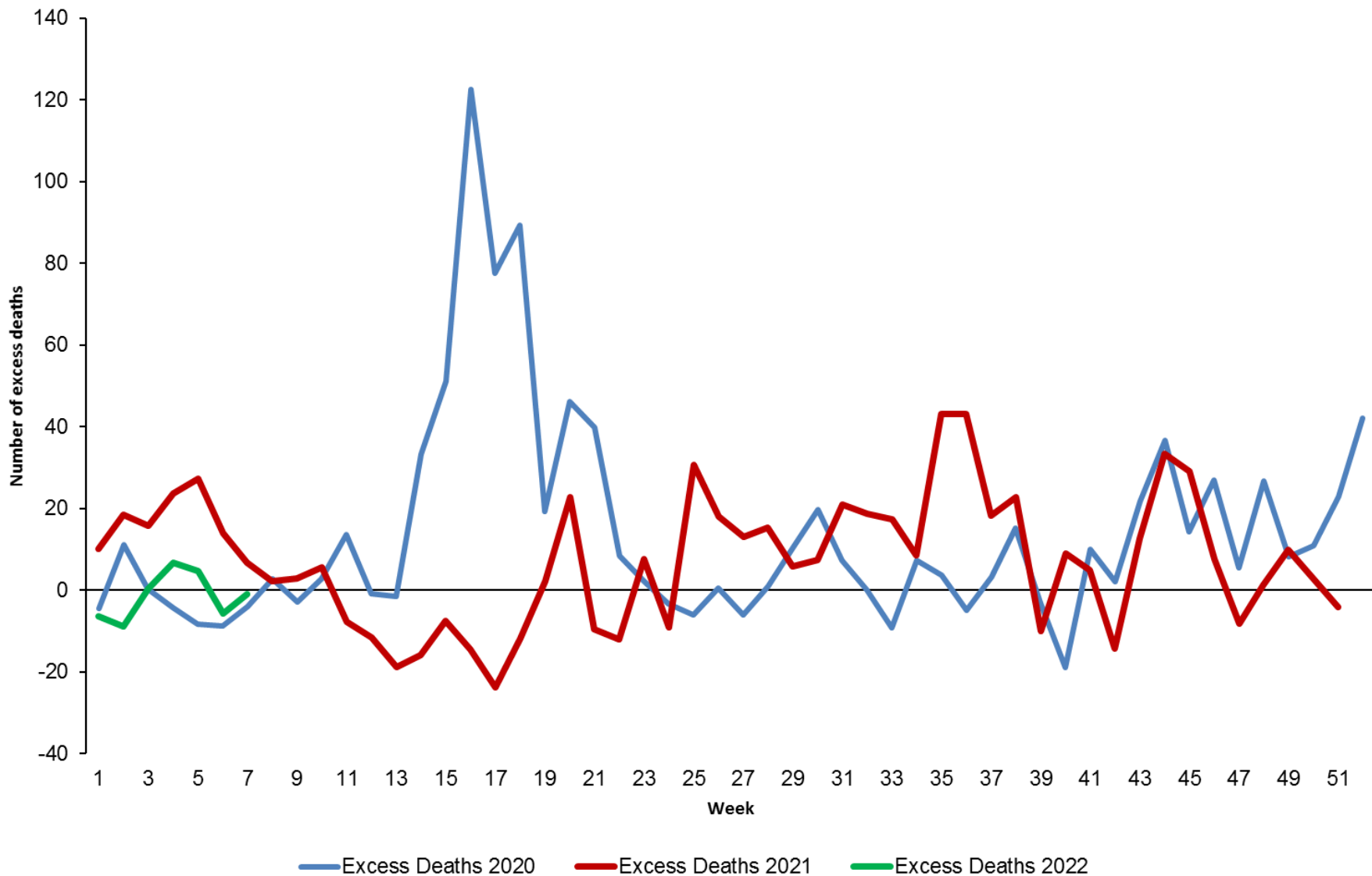
Total Number of Deaths Involving COVID-19 per Week in Manchester Residents

Deaths registered between Week 1 2021 and Week 7 (18 February) 2022



Note: Registrations in the first week of 2022 were affected by bank holidays over the Christmas and New Year period.

Total Number of Excess Deaths per Week in Manchester Residents Deaths Registered in 2020, 2021 and 2022 compared with Average for 2015-2019



Covid Vaccination Programme

Dr Manisha Kumar, Medical Director

Manchester Health & Care Commissioning

9th March 2022

Winter Vaccination Data Summary – 6th March 2022

67.7% of 12+ in Manchester have received a 1st dose | 62.8% of 12+ have received both doses | 73.2% of eligible patients have had a booster



First doses
405,662



Second doses
375,801



Boosters
256,460

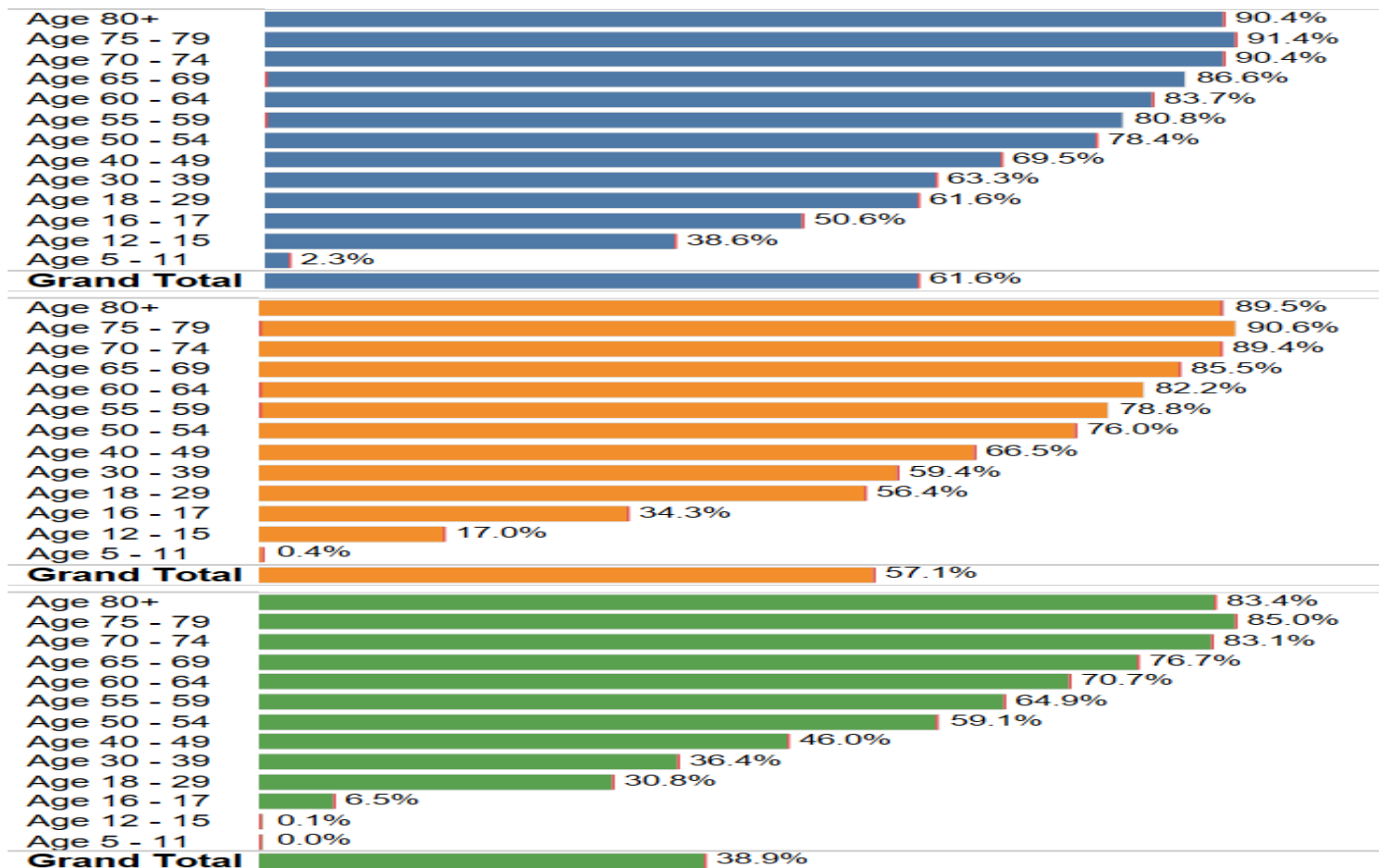


Total vaccines delivered
1,037,923

First Dose Uptake (based on registered population)

Second Dose Uptake (based on registered population)

Booster Uptake (based on registered population)

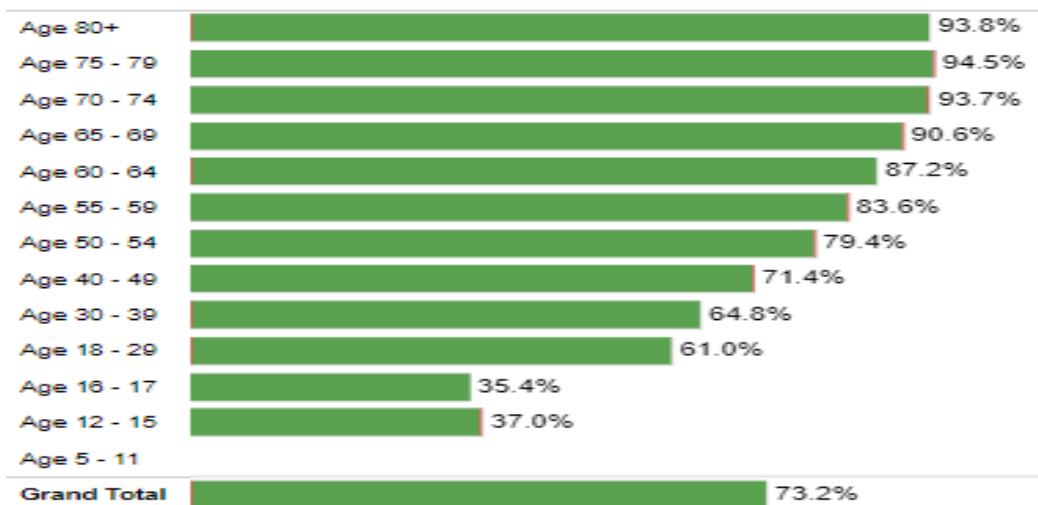


Booster coverage for eligible patients - 6th March 2022

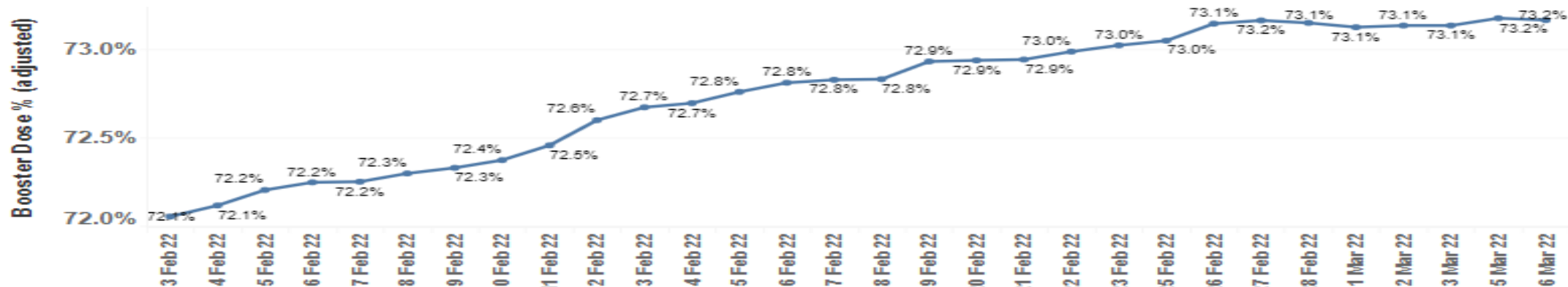
Booster Eligibility

Patients	Eligible for Booster (91 days+ second dose)	% of patients eligible for booster
Age 80+	14,471	88.9%
Age 75 - 79	11,165	90.0%
Age 70 - 74	16,290	88.7%
Age 65 - 69	20,454	84.6%
Age 60 - 64	27,025	81.1%
Age 55 - 59	34,378	77.6%
Age 50 - 54	38,774	74.5%
Age 40 - 49	93,276	64.4%
Age 30 - 39	126,276	56.3%
Age 18 - 29	167,526	50.6%
Age 16 - 17	15,845	18.4%
Age 12 - 15	34,106	0.3%
Age 5 - 11	61,075	0.0%
Grand Total	660,661	53.1%

Booster Coverage for eligible patients who are more than 91 days post second dose (previous day achievement)



Booster Coverage for eligible patients who are more than 91 days post second dose (last 31 days)



Vaccine coverage by Ward – as of 06.03.22

Split	Patients	D1	D1 Change from Last Week	D2	Received Flu	Eligible for Booster	Received COVID Booster	Received Flu and COVID Booster	% D1	% D1 Change from Last Week	% D2	% Flu	% Booster (All, inc not eligi..)	% Eligible for Booster	% received booster of
Ancoats and Beswick	17,215	11,528	6	10,889	3,026	10,595	7,689	2,134	67.0%	0.0%	63.3%	17.6%	44.7%	61.5%	72.6%
Ardwick	31,444	14,970	13	13,647	4,262	13,101	8,736	2,705	47.6%	0.0%	43.4%	13.6%	27.8%	41.7%	66.7%
Baguley	16,171	10,734	8	9,931	5,291	9,519	7,208	3,812	66.4%	0.0%	61.4%	32.7%	44.6%	58.9%	75.7%
Brooklands	11,107	7,759	3	7,285	3,919	6,928	5,566	2,933	69.9%	0.0%	65.6%	35.3%	50.1%	62.4%	80.3%
Burnage	19,224	12,384	9	11,314	5,519	10,570	7,448	3,665	64.4%	0.0%	58.9%	28.7%	38.7%	55.0%	70.5%
Charlestown	17,624	10,947	8	10,013	5,144	9,474	6,839	3,423	62.1%	0.0%	56.8%	29.2%	38.8%	53.8%	72.2%
Cheetham	22,139	11,800	6	10,647	4,097	9,942	5,826	2,219	53.3%	0.0%	48.1%	18.5%	26.3%	44.9%	58.6%
Chorlton	13,388	10,280	3	9,831	4,665	9,481	8,084	3,588	76.8%	0.0%	73.4%	34.8%	60.4%	70.8%	85.3%
Chorlton Park	18,326	12,744	3	11,852	5,741	11,303	8,751	4,173	69.5%	0.0%	64.7%	31.3%	47.8%	61.7%	77.4%
Clayton and Openshaw	20,986	12,290	18	11,093	5,192	10,459	7,006	3,035	58.6%	0.1%	52.9%	24.7%	33.4%	49.8%	67.0%
Crumpsall	18,257	10,561	12	9,531	4,329	8,931	5,610	2,694	57.8%	0.1%	52.2%	23.7%	30.7%	48.9%	62.8%
Deansgate	15,300	7,695	7	7,228	1,144	6,856	4,805	1,012	50.3%	0.0%	47.2%	7.5%	31.4%	44.8%	70.1%
Didsbury East	15,421	11,446	5	10,912	5,821	10,476	8,775	4,469	74.2%	0.0%	70.8%	37.7%	56.9%	67.9%	83.8%
Didsbury West	17,592	12,671	4	12,132	5,432	11,738	9,934	4,304	72.0%	0.0%	69.0%	30.9%	56.5%	66.7%	84.6%
Fallowfield	17,420	10,282	4	9,519	2,705	9,101	6,143	1,838	59.0%	0.0%	54.6%	15.5%	35.3%	52.2%	67.5%
Gorton and Abbey Hey	19,945	11,399	16	10,321	5,038	9,724	6,481	2,992	57.2%	0.1%	51.7%	25.3%	32.5%	48.8%	66.6%
Harpurhey	21,602	11,804	12	10,527	5,394	9,881	6,605	3,171	54.6%	0.1%	48.7%	25.0%	30.6%	45.7%	66.8%
Higher Blackley	16,454	10,407	10	9,489	4,883	9,025	6,513	3,409	63.2%	0.1%	57.7%	29.7%	39.6%	54.8%	72.2%

Vaccine coverage by Ward – as of 06.03.22

Hulme	22,293	11,248	10	10,406	2,531	9,949	6,484	1,703	50.5%	0.0%	46.7%	11.4%	29.1%	44.6%	65.2%
Levenshulme	21,212	13,012	7	11,860	4,979	11,048	7,522	3,060	61.3%	0.0%	55.9%	23.5%	35.5%	52.1%	68.1%
Live Outside Manchester	71,618	49,459	27	46,346	19,965	44,325	33,096	14,980	69.1%	0.0%	64.7%	27.9%	46.2%	61.9%	74.7%
Longsight	23,329	13,081	15	11,542	5,466	10,502	6,261	2,889	56.1%	0.1%	49.5%	23.4%	26.8%	45.0%	59.6%
Miles Platting and Newton..	19,698	11,855	8	10,768	5,264	10,247	7,034	3,375	60.2%	0.0%	54.7%	26.7%	35.7%	52.0%	68.6%
Moss Side	25,449	11,973	16	10,662	3,995	10,011	5,846	2,152	47.0%	0.1%	41.9%	15.7%	23.0%	39.3%	58.4%
Moston	18,235	11,539	8	10,566	5,568	10,017	7,308	3,805	63.3%	0.0%	57.9%	30.5%	40.1%	54.9%	73.0%
Northenden	14,964	10,000	5	9,247	5,057	8,803	6,978	3,676	66.8%	0.0%	61.8%	33.8%	46.6%	58.8%	79.3%
Old Moat	16,889	10,722	3	9,962	3,847	9,541	6,929	2,757	63.5%	0.0%	59.0%	22.8%	41.0%	56.5%	72.6%
Piccadilly	16,067	8,335	12	7,905	1,210	7,683	5,433	1,060	51.9%	0.1%	49.2%	7.5%	33.8%	47.8%	70.7%
Rusholme	21,746	11,888	10	10,772	3,762	10,297	6,803	2,447	54.7%	0.0%	49.5%	17.3%	31.3%	47.4%	66.1%
Sharston	16,443	10,372	5	9,524	4,874	9,074	6,938	3,435	63.1%	0.0%	57.9%	29.6%	42.2%	55.2%	76.5%
Whalley Range	17,533	10,550	3	9,678	3,822	9,100	6,508	2,602	60.2%	0.0%	55.2%	21.8%	37.1%	51.9%	71.5%
Withington	17,036	11,307	8	10,598	3,507	10,228	7,511	2,599	66.4%	0.0%	62.2%	20.6%	44.1%	60.0%	73.4%
Woodhouse Park	16,258	10,321	11	9,473	4,907	9,028	6,856	3,523	63.5%	0.1%	58.3%	30.2%	42.2%	55.5%	75.9%
Grand Total	668,385	407,363	295	375,470	160,356	356,957	255,526	109,639	60.9%	0.0%	56.2%	24.0%	38.2%	53.4%	71.6%

- Neighbourhood Teams have worked closely with schools where there has been low uptake. Whole family approach undertaken and a wide range of initiatives used with different schools across the city
- Worked in partnership with the Know Africa Foundation in Wythenshawe to promote vaccination
- In North Manchester - particularly Moston and Harpurhey - work is ongoing with local traders to further develop links with businesses. The shops are at the heart of the community and provide a valuable opportunity to engage with a wider section of the population.
- In Moston, Miles Platting and Newton Heath a newsletter was distributed to all residents which included a Covid overview from a local GP
- Leaflet drops have taken place in Moston targeting LSOA areas where vaccine uptake is low
- Delivered a bespoke offer in Northenden that ensured a large number (40 in total) of asylum seekers, who were living at the Britannia Hotel, were able to receive a vaccination. This included transport to and from the vaccination centre and comms being translated into 7 different languages
- Use of Covid Chat Co-ordinators in schools in the Gorton area to reach-out to difficult to engage families
- Worked in partnership with Housing associations in Gorton to ensure a co-ordinated approach was undertaken to share important messages with the community
- City wide initiative developed that will see young people aged 12 – 16 offered gym passes as an incentive to get vaccinated

Coverage for key cohorts – as of 06.03.22

	1 st dose – % in whole cohort	2 nd dose – % in whole cohort	Booster -for those eligible	
Children aged 12 - 17	39.1%	18.9%	28.8%	Additional specialist clinics to be delivered for this cohort. Working closely with system partners e.g. Youth Justice to address issues around equity
Care Homes	93.9%	91.3%	88.9%	Working closely with providers to ensure necessary systems are in place that will result in all residents being offered a spring booster (4 th dose) between April - July
Learning Disabilities	68.2%	60.8%	77.7%	Phone calls have commenced to patients who have had 1st/2nd doses but yet to have booster. Purposes of calls is to offer support and address barriers
Severe Mental Illness	74.8%	68.6%	76.3%	Use of data to drive strategy, closely working with PCNS and community services with target to get uptake for boosters above 80%
Housebound	91%	88.1%	87.5%	Ongoing home visits are being completed to ensure all eligible patients have required vaccination
Pregnancy	67.3%	59.8%	50.4%	Discussions underway re: a pilot that will see a vaccinations and immunisations team being created with a focus on pregnancy
Immunosuppressed	85.1%	81.8%	82.6%	Ongoing work with practices around identification of patients and use of Dashboards Commended nationally for best practice

Vaccine coverage – Breakdown by Ethnicity as of 06.03.22

Split	Patients	D1	D1 Change from Last Week	D2	Received Flu	Eligible for Booster	Received COVID Booster	Received Flu and COVID Booster	% D1	% D1 Change from Last Week	% D2	% Flu	% Booster (All, inc not vaccinated)	% Eligible for Booster	% received booster of eligible
African	38,138	20,791	25	18,213	8,144	16,728	9,007	3,656	54.5%	0.1%	47.8%	21.4%	23.6%	43.9%	53.8%
Any other Asian backgrou..	18,015	9,340	11	8,385	3,286	7,874	4,831	1,702	51.8%	0.1%	46.5%	18.2%	26.8%	43.7%	61.4%
Any other Black, African o..	9,915	4,514	6	3,864	1,635	3,513	1,788	705	45.5%	0.1%	39.0%	16.5%	18.0%	35.4%	50.9%
Any other ethnic group	23,480	10,892	12	9,800	3,448	9,247	5,535	1,696	46.4%	0.1%	41.7%	14.7%	23.6%	39.4%	59.9%
Any other Mixed or Multipl..	7,152	3,378	6	3,037	1,241	2,790	1,805	572	47.2%	0.1%	42.5%	17.4%	25.2%	39.0%	64.7%
Any other White backgrou..	42,081	20,151	11	18,703	5,226	18,079	11,934	3,522	47.9%	0.0%	44.4%	12.4%	28.4%	43.0%	66.0%
Arab	5,926	3,040	6	2,697	978	2,522	1,230	461	51.3%	0.1%	45.5%	16.5%	20.8%	42.6%	48.8%
Bangladeshi	6,881	4,829	5	4,386	2,146	4,068	2,845	1,270	70.2%	0.1%	63.7%	31.2%	41.3%	59.1%	69.9%
Caribbean	8,396	4,296	2	3,927	1,903	3,756	2,446	1,426	51.2%	0.0%	46.8%	22.7%	29.1%	44.7%	65.1%
Chinese	20,042	8,285	13	7,653	2,665	7,402	5,697	1,794	41.3%	0.1%	38.2%	13.3%	28.4%	36.9%	77.0%
Declined to provide ethnic..	13,671	6,698	8	5,884	3,024	5,318	3,542	1,301	49.0%	0.1%	43.0%	22.1%	25.9%	38.9%	66.6%
English, Welsh, Scottish, ..	240,820	184,120	81	173,806	87,949	168,081	135,692	70,385	76.5%	0.0%	72.2%	36.5%	56.3%	69.8%	80.7%
Gypsy or Irish Traveller	297	75	0	66	31	63	42	17	25.3%	0.0%	22.2%	10.4%	14.1%	21.2%	66.7%
Indian	16,001	10,688	9	10,062	4,248	9,571	7,053	2,911	66.8%	0.1%	62.9%	26.5%	44.1%	59.8%	73.7%
Irish	7,298	5,505	0	5,292	2,980	5,225	4,415	2,716	75.4%	0.0%	72.5%	40.8%	60.5%	71.6%	84.5%
No record of ethnicity stat..	137,749	66,052	65	59,761	14,522	56,216	37,150	6,814	48.0%	0.0%	43.4%	10.5%	27.0%	40.8%	66.1%
Pakistani	58,980	38,143	32	34,133	14,287	31,165	17,307	7,497	64.7%	0.1%	57.9%	24.2%	29.3%	52.8%	55.5%
Roma	35	16	0	16	3	16	8	1	45.7%	0.0%	45.7%	8.6%	22.9%	45.7%	50.0%
White and Asian	3,291	1,798	0	1,639	772	1,525	1,019	353	54.6%	0.0%	49.8%	23.5%	31.0%	46.3%	66.8%
White and Black African	5,196	2,559	1	2,248	1,005	2,029	1,112	411	49.2%	0.0%	43.3%	19.3%	21.4%	39.0%	54.8%
White and Black Caribbean	5,021	2,193	2	1,898	863	1,769	1,068	429	43.7%	0.0%	37.8%	17.2%	21.3%	35.2%	60.4%
Grand Total	668,385	407,363	295	375,470	160,356	356,957	255,526	109,639	60.9%	0.0%	56.2%	24.0%	38.2%	53.4%	71.6%

- The Peripatetic Team continue to deliver clinics in areas with low uptake and diverse populations
- Working with community groups, Europia, to try and develop relationships with the Roma community
- Delivery of health workshops to communities with low vaccine uptake with a focus on a wraparound health offer – not just covid vaccination

A programme of pop-up clinics is a key priority in January to March to reach those who have not yet received a booster or a first or second dose, using a data driven approach at neighbourhood level to identify priority locations

W/C 7/03/2022

8th - Xaverian College (11:00 - 14:00)

9th - Welcome Centre, Cheetham (10:00 - 14:00)

10th - Abraham Moss, Year 8 Parents Evening (Times TBC)

11th - Powerhouse, Moss Side (11:00 - 16:00)

W/C 14/03/2022

17th – Sainsburys Fallowfield (11:00 - 16:00)

18th - Didsbury Mosque (10:00 - 15:00)

19th - Parrswood Entertainment Complex (11:00 - 16:00)

W/C 21/03/2022

22nd - Ebsworth Street Car Park, Moston (Times TBC)

24th - Abraham Moss, Year 9 Parents Evening (Times TBC)





Peripatetic team case study – Manchester Communications Academy, Blackley

Challenge:

- To support a neighbourhood priority school’s vaccination programme with a ‘family offer’ to vaccinate parents and teachers

Response:

- On the 8th February the Peripatetic Team delivered a Pop-Up vaccination clinic on school grounds at Manchester Communications Academy, Blackley
- Prior to the event, the MHCC Integrated Neighbourhood Team linked in with the school who promoted the offer to parents and teachers
- They also distributed leaflets to the immediate local neighbours of the school
- Promotion of vaccination on electronic billboards that are located outside the school grounds
- Covid Chat Community Volunteer Co-ordinators attended coffee mornings at the school to have informal conversations with people around the benefits of vaccination
- The clinics operational hours were 1pm-4pm, to capture school pick-up time

Outcome:

- **36** vaccines were delivered during the session – majority boosters but also 1st and 2nd doses. Those vaccinated included teachers, parents and local residents
- Several students were also vaccinated who missed the schools consent deadline

COVID Vaccination Programme



COVID vaccinations for 12-15 year olds.



It is really important to vaccinate your child. COVID is mild in most children, but can make some very unwell.



One dose gives good protection. Two doses gives stronger protection for longer.

www.manchester.gov.uk/12-15





Vaccine Equity - Pakistani Community Centre - Evaluation

Challenge:

Data analysis highlighted concerns around uptake in local community

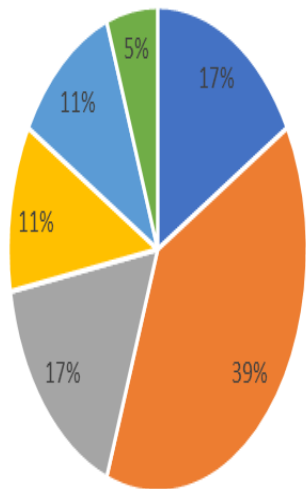
Response:

- On 5 consecutive Saturdays between 30.01.22 and the 26.02.22 the Peripatetic Team delivered clinics at the Pakistani Community Centre in Longsight
- The clinics were delivered at a time when the area was likely to be busy and accessible by a cross section of the community
- A multi agency approach was used which ensured support from local partners and key stakeholders to promote the pop-ups

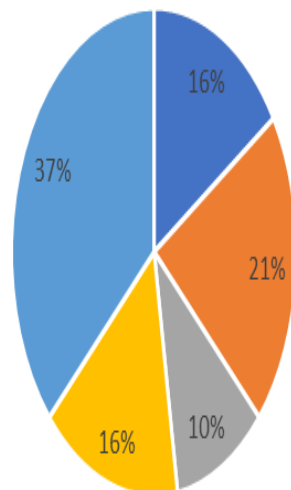
Outcome:

- 271 vaccinations have been given in total over the 5 sessions
- The first clinic offered only Covid vaccinations. As a result of consultations with members of the community the offer developed over the 5 week period and the end result was that the last session was made into a 'health and wellbeing event' with CAB, Cancer Answer and BUZZ all based onsite to give patients advice and guidance
- Learning from the approach undertaken will be used to influence how the Peripatetic Team delivers clinics in the future
- Feedback from one of the clinics (on the 19th of February) was captured and is displayed on the next page.

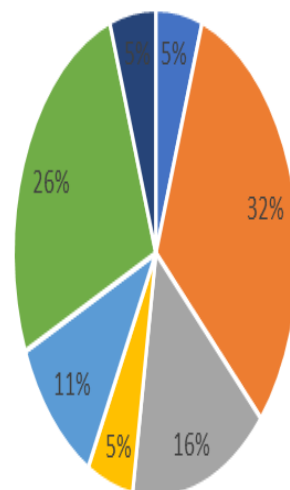
What is your ethnicity?



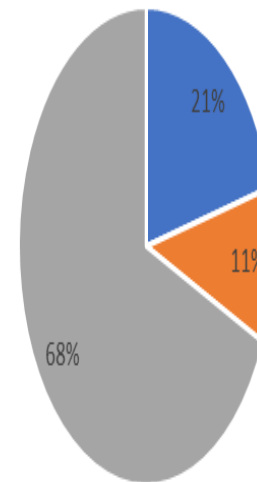
How old are you?



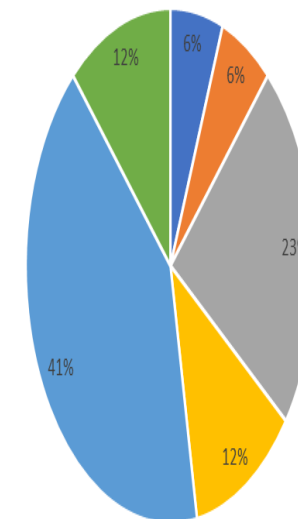
Where do you live?



Which vaccination did you come for?



Where did you hear about this vaccination centre?



- English, Welsh, Scottish, Northern Irish or British
- Pakistani
- Bangladeshi
- African
- Caribbean
- Arab
- 11 to 18
- 18 to 25
- 26 to 40
- 41 to 50
- 50+
- M4
- M12
- M19
- SK4
- M13
- M17

- First dose of the Covid vaccination
- Second dose of the Covid vaccination
- Booster dose of the Covid vaccination
- Social media - Facebook
- Social media - Twitter
- Text/phone call from your GP
- Word of mouth
- Outdoor advertising
- Other (please specify)

*** 21 patients surveyed on 19th February**

Children and young people's 5-17 at risk clinic – The Jain and RMCH

Challenge:

The Manchester uptake in the 12-15 at risk and 16-17 at risk were identified as being low with a total of 43.7% receiving the first dose ranging from 29.2% in Hulme Moss side and Rusholme to 64.3% in Didsbury Burnage and Chorlton. From the 31st January LVS sites will be able to vaccinate an additional cohort of children aged 5-11 who are at risk, adding another 5554 in the city.

Response:

To facilitate a 5-17 at risk clinic, to include a whole family offer, during half term week with RMCH as a trusted partner for many families at one of the local vaccination sites. This was a whole city offer with a targeted comms drive and bespoke booking system to enable families to book and receive their vaccination in a calm child focused clinic.

Outcome:

- Clinic delivered from the Jain Local vaccination Site with ample parking for families
- A taxi could be booked via the Manchester Grab a Job Scheme to help families attend
- RMCH supported with an LD nurse and a play specialist on the day, and they were invaluable to help with distraction, play and assurance to the CYP before, during and after the vaccination
- A total of 127 vaccinations were delivered on the day with the majority in the 5-11 age range along with some mums and dads
- Parents were grateful for the approach adopted and the calm child centre environment and approach offered
- Lots of treats were planned following the vaccination (see picture)
- Further clinics are to be planned across the city to allow for further 1st doses and to allow for the 2nd doses of this cohort in 8 weeks

We were so happy to be able to go to a clinic where there were other families like ours and staff, who understood my little boy. He was so excited to be protected from COVID 19 and have his vaccination but because of his SEND, had really high anxiety about it. The lady on the door was so helpful and flexible and that followed with everyone else we saw. Mike was able to jump in the puddles outside while he waited! Thank you so much, I'm so proud of him and he's delighted to be vaccinated
Michaels Mum




- **Targeted letter** sent to 6,400 clinically at risk 5-17 advertising clinic at the Jain Centre and how to book appointments at other clinics via the Gateway
- **1,000 flyers** were created, printed and distributed to the 10 key SEND schools for children to put in their book bags. Flyers were also distributed via the Jain Centre and the Parent Carer forum
- The clinic flyer, details and **‘walk through experience’ pictures and video**
- uploaded to [the MHCC website](#)
- Clinic promoted on MHCC **social media channels** and encouraged local organisations to share
- Shared the flyer in the following social media groups:
 - Manchester mums
 - Family Days out near Manchester
 - What’s on in Greater Manchester
 - Manchester Family Group
 - Manchester Parent Carer Forum
 - Manchester City Centre mums, dads and carers group
- MFT advertised the clinic in their **weekly staff bulletin**
- **RMCH letter** to parents to recommend vaccination to those identified at risk 5-12 year olds
- Clinic details shared via SEND Lead at Manchester City Council with special schools and autism resourced provision secondaries. Also shared with primary schools and promoted it at online parent sessions

COVID-19 Vaccination Programme

Pfizer pop-up vaccination clinic for children aged 5 to 17 at clinical risk

 **Jain Community Centre,
Manchester,
M12 4QE**

 **Friday 25 February,
10am - 3pm**

 Call the Gateway for free on **0800 092 4020 or 0161 947 0770 to book an appointment.** They can organise **free transport** if you need help getting to your appointment.

With support from Royal Manchester Children's Hospital Therapeutic and Specialised Play Services

Health play specialists will be available on to support patients with learning disabilities

Children at serious risk from the complications of COVID-19 include those:

- with severe neuro disabilities
- those whose immune systems don't work as well
- who have profound and multiple or severe learning disabilities
- on the learning disability register
- who live with Down's syndrome
- with long term serious conditions affecting their body

The pilot has been operational in Manchester since the end of January and since its inception over 700 people have had their records updated. The evidenced need for the offer has resulted in clinics being offered from a number of locations inc. the Town Hall Extension, the Powerhouse and the University of Manchester. One of the keys to the success of the programme has been the roll out of an extensive comms strategy which has consisted of:

Content creation

Information created that was easy to read and understand - we know that many who would benefit from using the service would not be native English speakers, so we produced materials in languages including Urdu, Arabic, Standard Chinese, Bengali, Somali, Polish, Romanian, French, Italian, Kurdish and Punjabi

Social media

Key information shared in multiple languages in several community Facebook groups inc. International Students of Manchester, Manchester Pakistani Community, Indians of Manchester, Manchester Chinese Society, Manchester Muslim Society noticeboard, Latvians of Manchester and Romanians of Manchester

GP Practice engagement

GP practices supported us by sharing key messages about the programme. Practices were encouraged to send out text messages to patients about the service, share social media posts, include information on their websites and give copies of leaflets to give to people at practices in English and community languages

Outdoor advertising

We also used ad vans displaying information about the overseas recording and vaccination clinics in key local areas. Routes were plotted by Health Development Co-ordinators from MLCO to ensure that they had maximum impact.

هل تلقيت جرعة لقاح كوفيد 19 في الخارج؟

أنت بحاجة إلى زيارة إحدى عياداتنا لتتأكد من إضافة التفاصيل الخاصة بك إلى سجل الممارس العام الخاص بك.

من بإمكانه استخدام هذه الخدمة

تتأكد من إثبات تفاصيل تلقي اللقاح في الخارج في سجل عيادة المصنف الصحية الوطنية (NHS) الخاص بك، بغض النظر عن:

1. مسجلة مع ممارس عام في إنجلترا. إذا لم يتم تسجيلك بواسطة ممارس عام، فإتة بإمكانك معرفة كيفية إجراء ذلك على الموقع الإلكتروني www.nhs.uk أو من خلال الاتصال على 0300 311 22 33
2. مقيم (صورة مؤقتة أو دائمة) في إنجلترا
3. أكثر من 16 عامًا
4. تلقيت بـلقاح أحد أنواع اللقاحات أدناه:

- أكسفورد/ أسترازينيكا (Vaxzevria)
- أليز كومينتيك (Cominaty)
- جونسون آند جونسون (Janssen)
- سبكوفاك (Spikovax)
- كوفيدشيلد
- سينوفارم
- سينوفارم
- سينوفارم
- كورونافاك
- كورونافاك

كيفية التسجيل

يتطلب ذلك حجز موعد من طريق الإنترنت على موقع نظام الحجز الوطني. أصبح رمز الاستجابة السريعة (QR) متوفرًا بواسطة تلك المراكز لزيارة صفحة الحجز.

يمكنك أيضًا معرفة المزيد حول العيادات المتاحة من دون حجز لتسجيل اللقاحات الثلاثة في الخارج، من خلال زيارة الموقع الإلكتروني www.manchester.gov.uk/overseas

ما ينبغي أن أحضره

- من الحاضر هذه الأشياء معك لتسجيل لقاحك:
- جواز السفر
- شهادة إثبات مؤهلة تثبت أي نوع من اللقاحات كوفيد

Did you have your Covid-19 vaccination overseas?

You will need to visit one of our clinics to get your details added to your GP record.

Who can use this service:

To have your overseas vaccination details added to your NHS Record you must be:

1. Registered with a GP Practice in England. If you are not registered with a GP Practice, you can find out how to do this at www.nhs.uk or by calling 0300 311 22 33
2. A resident (temporary or permanent) in England
3. Over 16
4. Vaccinated overseas with one of the vaccinations below:

- Oxford/AstraZeneca (Vaxzevria)
- Pfizer/BioNTech (Cominaty)
- Johnson & Johnson (Janssen)
- Moderna (Spikovax)
- Institute of India (Covishield)
- Beijing Institute of Biological Products (Sinopharm BIBP)
- Sinovac (ConozVac)
- Shant Biotech (Covaxin)

Where you need to go:

You will need to visit one of our sites to get your overseas vaccination details added to your record:

- Manchester Town Hall, Albert Square, Manchester, M2 5DB - Wednesday 2 March and Thursday 3 March - just walk in between 1.30pm - 5.30pm
- Whitworth Corridor, The University of Manchester, Oxford Rd, Manchester M13 9PL - Thursday 3 March - just walk in between 10am - 2pm
- Moss Side Millennium Powerhouse, 140 Raby Street, Moss Side, M14 4SL - Friday 4 March - just walk in between 11am - 4pm

What you need to bring:

Please bring these things with you to register your vaccinations:

- Your passport or driving licence
- Proof of which COVID vaccinations you have had and when

Partnership working

- We have worked with partners right across the City to ensure that offers reach people that they need to.
- We have worked with the University of Manchester communications team to ensure that all eligible students know about the offer on campus; producing web copy, social media assets and posters
- We have also shared the student offer with other Higher Education Institutions right across the city including Manchester Metropolitan University and The Manchester College.
- We have worked with voluntary sector organisations including the Wai Yin Chinese Society and Caribbean African Health Network (CAHN) to disseminate information and with our Covid Health Equity Manchester (CHEM) group and our sounding boards
- Information has also been shared via our community toolkit which is issued to community groups weekly and information shared by neighbourhood teams (Manchester City Council and Manchester LCO) across the City
- Manchester Foundation Trust (MFT) shared information about clinics in their staff newsletter about the service

